

TDD : XXXXPol 2300~2690MHz/3300~3800MHz BCH 65°/65° 16/16.7dBi 2~12°/2~12° Beamforming
 FDD : XXXXPol 698~960MHz×2/1427~2690MHzx2 65°/65° 14.3/18 dBi 2~12°/2~12° Integrated and replaceable
 RCU (Remote Control Unit) Antenna

Electrical Specifications-TDD

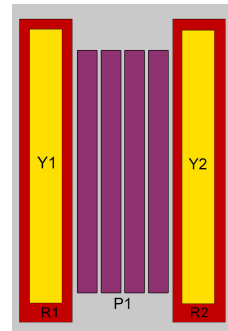
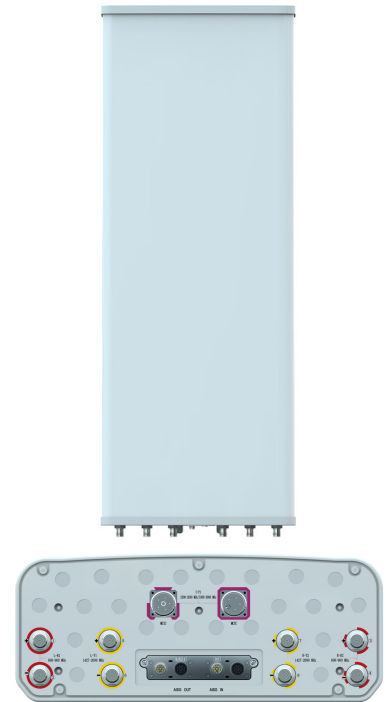
		P1-2300~3800		
		2300~2690	3300~3800	
General Parameters	Frequency range(MHz)			
	Polarization	±45°		
	Electrical downtilt(°)	2~12		
	Electrical downtilt tolerance(°)	±1		
Calibration and Electrical Parameters	Coupling factor between calibration port and each antenna port(dB)	-26±2		
	Max.amplitude tolerance from calibration port to input ports(dB)	<0.9		
	Max.phase tolerance from calibration port to input ports(°)	≤9		
	Ports VSWR	≤1.5		
	Co-polarization isolation between ports(dB)	≥20		
	Cross-polarization isolation between ports(dB)	≥ 22		
Radiation Parameters	Single Column Beam	Horizontal 3dB beam width(°)	95±15	65±15
		Gain(dBi)	14.5±0.9	16.2±0.9
		Vertical 3dB beam width(°)	8.3±0.6	5.9±0.6
		Cross polar ratio(0°)(dB)	≥15	
		Front to back ratio(dB)	≥22	≥24
		Vertical sidelobe suppression for first sidelobe above main beam(dB)	≥15	≥14
	Broadcast Beam	Gain(dBi)	16±0.9	16.7±0.9
		SPR(±60°)(%)	≥90	
		Vertical 3dB beam width(°)	8.3±0.6	5.9±0.6
		Cross polar ratio(0°)(dB)	≥18	
		Front to back ratio(dB)	≥25	
	Service Beam	0° direct beam gain(dBi)	19.7±0.9	21.4±0.9
		0° direct beam horizontal 3dB beam width(°)	24±3	18±3
		0° direct beam sidelobe suppression(dB)	≥10	
		0° direct beam cross polar ratio(axial)(dB)	≥18	
		0° direct beam front to back ratio(dB)	≥25	
		±30° direct beam gain(dBi)	18±0.8	18.5±0.8

Electrical Specifications				
Frequency range (MHz)	R1/R2 -698~960			
	698~803	790~862	824~894	880~960
Polarization	±45°			
Gain at mid tilt (dBi)	13.6	13.8	13.9	14.3
Gain over all tilts (dBi)	13.4±0.7	13.6±0.6	13.7±0.6	14.1±0.6
Horizontal 3dB beamwidth (°)	69±6	68±5	67±6	66±5
Vertical 3dB beamwidth (°)	15.4±1.2	14.1±0.7	13.7±0.6	12.9±0.7
Front to back ratio(dB) Total power, 180°	>21	>22	>23	>23
Cross polar ratio (dB) (at Boresight)	>17	>18	>18	>18
Electrical downtilt (°)	2~12			
Sidelobe suppression (dB) (First sidelobe above main beam)	>15	>15	>16	>15
VSWR	<1.5			
Isolation: intra-system (dB)	≥25			
Isolation: inter-system (dB)	R1//R2≥25 R1,R2//other≥26			
Intermodulation IM3 (2×43dBm carrier)	≤-150 dBc			
Impedance (Ω)	50			
Max. power per input (W) @50°C	400			
Lightning protection	Dc Ground			

Electrical Specifications					
Frequency Range (MHz)	Y1/Y2 -1427~2690				
	1427~1518	1710~1990	1920~2200	2200~2490	2490~2690
Polarization	±45°				
Gain at mid tilt (dBi)	15.3	17	17.3	17.6	18
Gain over all tilts (dBi)	15.1±0.5	16.8±0.7	17.1±0.6	17.4±0.6	17.8±0.8
Horizontal 3dB beamwidth (°)	72±8	67±6	66±6	62±6	58±6
Vertical 3dB beamwidth (°)	9.6±0.5	7.4±0.6	6.6±0.6	5.9±0.5	5.5±0.5
Front to back ratio (dB) Total power, ±30°	>26	>26	>25	>24	>24
Cross polar ratio (dB) (at Boresight)	>18	>20	>20	>19	>19
Electrical downtilt (°)	2~12				
Sidelobe suppression (dB) (First sidelobe above main beam)	>16	>16	>16	>16	>15
VSWR	<1.5				
Isolation: intra-system (dB)	≥23	≥25			
Isolation: inter-system (dB)	≥25	≥25			
Intermodulation IM3 (2×43dBm carrier)	≤-150 dBc				
Impedance (Ω)	50				
Max. power per input (W) @50°C	200				
Lightning protection	Dc Ground				

Mechanical Specifications	
Connector	TDD: 1×(MQ4+MQ5)Connector-Male FDD: 8×4.3-10-Female
Connector position	Bottom
Height × width × depth (mm)	1499×499×198
Packing size (mm)	1790×565×250
Antenna weight (kg)	27
Installation kit weight (kg)	5.4
Packing weight (kg)	39
Wind load (N,at 150km/h) Frontal/Lateral/Maximum	525/150/510
Max. wind velocity (km/h)	216
Radome material	Fiberglass
Radome color	Gray
Mechanical tilt (°)	0~15
Operating temperature (°C)	-50~65
Mounting hardware (mm)	Φ50~Φ115

Integrated RET Properties	
RET model	TRCU-TQ20P3V01
RET type	Integrated (Replaceable)
RET protocol	AISG 2.0 / 3GPP
Power supply(V)	10-30 DC
Power consumption(W)	≤0.6 (Idle, 12V), ≤6 (in Motion, 12V)
Adjustment time (Full Range)	<4Mins
Adjustment cycles	>50,000
Temperature range (°C)	-40~65
Lightning protection	3KA(8/20μs) @ Pin5& Pin3; 5KA(8/20μs) @ Pin1/ Pin6& Pin7
Connectors	2 x 8 Pin circle connector according To IEC 60130-9 And AISG. Daisy chain in: Male, Daisychain out : Female Pin1:12V; Pin3:RS485B; Pin5:RS485A; Pin6:10-30V; Pin7:GND; Pin2 & Pin4 & Pin8: N/C



Ant Array	RET Unique ID
R1	TY00000.....R1
R2	TY00000.....R2
Y1	TY00000.....Y1
Y2	TY00000.....Y2
P1	TY00000.....P1

Antenna Pattern Sample For Reference

