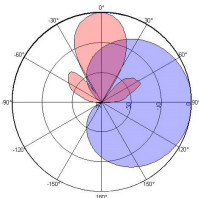
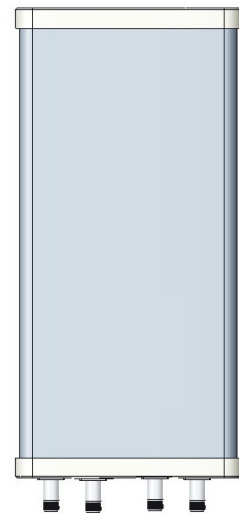


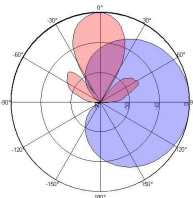
XXPol 1710~2700MHz/4800~4900MHz 33°/30° 10/10dBi 0°/0° Fixed Electrical Downtilt Antenna,with Combiner Integrated

Electrical Specifications			
Frequency range(MHz)	1710~2200	2200~2700	4800~4900
Polarization	±45°		
Gain (dBi)	≥10	≥11	≥10
Horizontal 3dB beamwidth (°)	34±5	26±4	28±3
Vertical 3dB beamwidth (°)	67±6	66±5	62±4
Horizontal 20dB beamwidth (°)	≤84	≤85	≤76
Vertical 20dB beamwidth (°)	≤193	≤186	≤176
Front-to-back ratio (dB)	≥20	≥20	≥17
Cross-polar ratio (dB)	≥16	≥20	≥15
Electrical downtilt (°)	0		
Sidelobe suppression (dB) (First sidelobe above main beam)	≥20 (H) ≥16 (E)	≥18 (H) ≥15 (E)	≥18 (H) ≥12 (E)
VSWR	≤1.7		
Isolation: intra-system (dB)	≥20		
Intermodulation IM3 (2×43dBm carrier)	≤-153dBc		/
Impedance (Ω)	50		
Max. power per input (W) @50°C	100		
Lightning protection	Dc Ground		

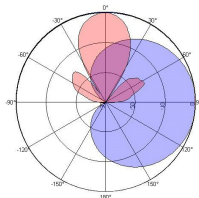
Mechanical Specifications	
Connector	4×N-Female
Connector position	Bottom
Height×width×depth (mm)	420×320×150
Antenna weight (kg)	4.93
Max. wind velocity (km/h)	216
Radome material	UPVC
Radome color	Gray
Mechanical tilt (°)	0~10
Operating temperature (°C)	-40~60
Mounting hardware (mm)	Φ50~Φ115



1710-2200MHz



2200-2700MHz



4800-4900MHz

