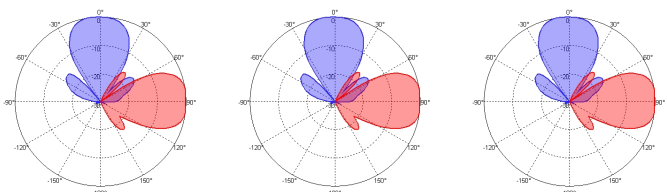
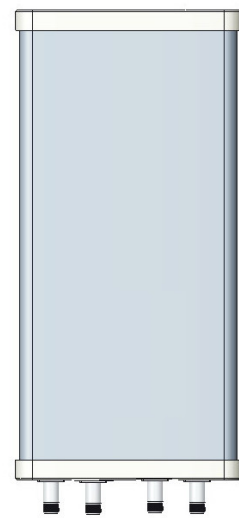


XXPol 1710~2700MHz/4800~4900MHz 35°/30° 15/13dBi 0°/0° Fixed Electrical Downtilt Antenna,with Combiner Integrated

Electrical Specifications			
Frequency range(MHz)	1710~2200	2200~2700	4800~4900
Polarization	±45°		
Gain (dBi)	≥13	≥15	≥12.5
Horizontal 3dB beamwidth (°)	34±5	28±5	29±3
Vertical 3dB beamwidth (°)	35±4	25±5	29±3
Horizontal 20dB beamwidth (°)	≤99	≤83	≤87
Vertical 20dB beamwidth (°)	≤99	≤75	≤72
Front-to-back ratio (dB)	≥22	≥22	≥20
Cross-polar ratio (dB)	≥17	≥20	≥15
Sidelobe suppression (dB) (First sidelobe above main beam)	≥17 (H) ≥20 (V)	≥17 (H) ≥17 (V)	≥16 (H) ≥20 (V)
VSWR	≤1.7		
Isolation: intra-system (dB)	≥25		
Intermodulation IM3 (2×43dBm carrier)	≤-153dBc		/
Impedance (Ω)	50		
Max. power per input (W) @50°C	100		
Lightning protection	Dc Ground		

Mechanical Specifications	
Connector	4×N-Female
Connector position	Bottom
Height×width×depth (mm)	500×320×150
Antenna weight (kg)	6.5
Max. wind velocity (km/h)	216
Radome material	UPVC
Radome color	Gray
Mechanical tilt (°)	±40
Operating temperature (°C)	-40~60
Mounting hardware (mm)	Φ50~Φ115



1710-2200MHz 2200-2700MHz 4800-4900MHz

