

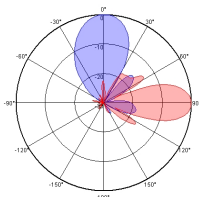
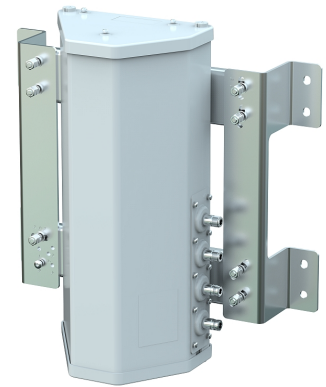
XXPol 1710~2690MHz×2 30° 14dBi 0° Fixed Electrical Downtilt Antenna

Electrical Specifications

Frequency range(MHz)	1710~2690		
	1710~2200	2200~2490	2490~2690
Polarization	±45°		
Gain (dBi)	≥13	≥13.5	≥14
Horizontal 3dB beamwidth (°)	34±5	26±2	24±2
Vertical 3dB beamwidth (°)	34±5	26±2	24±2
Front-to-back ratio (dB)	≥22		
Cross-polar ratio (dB)	≥10(within 3dB)		
Electrical downtilt (°)	0		
VSWR	≤1.5		
Isolation: intra-system (dB)	≥25		
Intermodulation IM	≤-107 dBm(2×37dBm)		
Impedance (Ω)	50		
Max. power per input (W) @50°C	150		
Lightning protection	Dc Ground		

Mechanical Specifications

Connector	4×N-Female
Connector position	Lateral
Height×width×depth (mm)	480×234×200
Packing size (mm)	610×532×436
Antenna weight (kg)	6.5
Installation kit weight (kg)	5
Packing weight (kg)	14
Max. wind velocity (km/h)	216
Radome material	Fiberglass
Radome color	Gray
Mechanical tilt (°)	0
Operating temperature (°C)	-40~60
Mounting hardware (mm)	Wall Mount



1710~2690MHz