

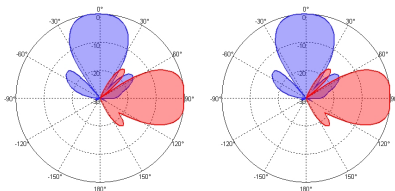
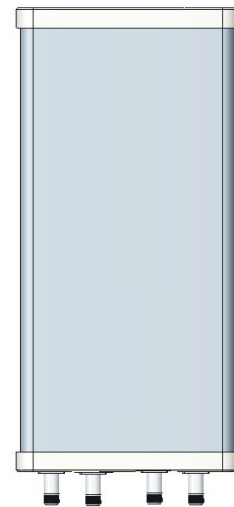
XXPol 1710~2200MHz/2200~2700MHz 33°/33° 13/15dBi 0°/0° Fixed Electrical Downtilt Antenna

Electrical Specifications

Frequency range(MHz)	1710~2700×2	
	1710~2200	2200~2700
Polarization	±45°	
Gain (dBi)	≥13	≥15
Horizontal 3dB beamwidth (°)	34±5	28±5
Vertical 3dB beamwidth (°)	35±4	25±5
Front-to-back ratio (dB)	≥22	
Cross-polar ratio (dB)	≥17	≥20
Electrical downtilt (°)	0	
Sidelobe suppression (dB) (First sidelobe above main beam)	≥17 (H) ≥20 (V)	≥17 (H) ≥17 (V)
VSWR	≤1.7	
Isolation: intra-system (dB)	≥25	
Intermodulation IM3 (2×43dBm carrier)	≤-153dBc	
Impedance (Ω)	50	
Max. power per input (W) @50°C	150	
Lightning protection	Dc Ground	

Mechanical Specifications

Connector	4×N Female
Connector position	Bottom
Height×width×depth (mm)	500×320×105
Antenna weight (kg)	5.3
Installation kit weight (kg)	4.9
Packing weight (kg)	11.8
Max. wind velocity (km/h)	216
Radome material	Fiberglass
Mechanical tilt (°)	Horizontal±45°/vertical±45°
Operating temperature (°C)	-40~60
Mounting hardware (mm)	Φ50~Φ115



1710-2200MHz

2200-2700MHz