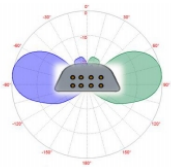
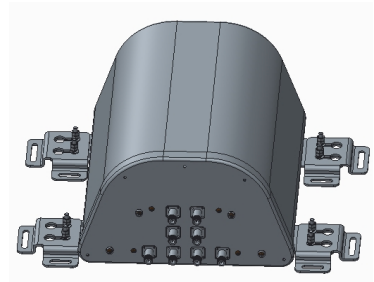


XXXXPol 3300~3800MHz×4 18° 19.5dBi Fixed Electrical Downtilt Antenna

Electrical Specifications	
Frequency range(MHz)	3300~3800
Polarization	±45°
Gain (dBi)	19.5
Horizontal 3dB beamwidth (°)	18
Vertical 3dB beamwidth (°)	18
Front-to-back ratio (dB)	≥20
Cross-polar ratio (dB)	0°≥10
VSWR	≤1.5
Isolation: intra-system (dB)	≥25
Impedance (Ω)	50
Max. power per input (W) @50°C	100
Lightning protection	Dc Ground

Mechanical Specifications	
Connector	8×N-Female
Connector position	Bottom
Height×width×depth (mm)	480×390×250
Packing size (mm)	675×587×318
Antenna weight (kg)	9.9
Packing weight (kg)	13.1
Max. wind velocity (km/h)	216
Radome material	Fiberglass
Operating temperature (°C)	-50~65
Installation kit model	挂壁安装



3300~3800MHz