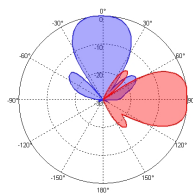
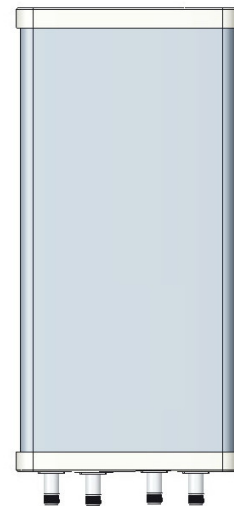


XXPoI 4800~4900MHz 30° 13dBi 0° Fixed Electrical Downtilt Antenna,with Combiner Integrated

Electrical Specifications	
Frequency range(MHz)	4800~4900
Polarization	±45°
Gain (dBi)	≥12.5
Horizontal 3dB beamwidth (°)	29±3
Vertical 3dB beamwidth (°)	29±3
Front-to-back ratio (dB)	≥20
Cross-polar ratio (dB)	≥15
Sidelobe suppression (dB) (First sidelobe above main beam)	≥16 (H) ≥20 (V)
VSWR	≤1.7
Isolation: intra-system (dB)	≥25
Intermodulation IM3 (2×43dBm carrier)	≤-153 (2×20W)
Impedance (Ω)	50
Max. power per input (W) @50°C	150
Lightning protection	Dc Ground

Mechanical Specifications	
Connector	4×N-Female
Connector position	Bottom
Height×width×depth (mm)	260×160×81
Antenna weight (kg)	1.9
Installation kit weight (kg)	1.9
Packing weight (kg)	4.3
Max. wind velocity (km/h)	216
Radome material	Fiberglass
Mechanical tilt (°)	vertical-45~+45
Operating temperature (°C)	-40~60
Mounting hardware (mm)	Φ50~Φ115



4800-4900MHz