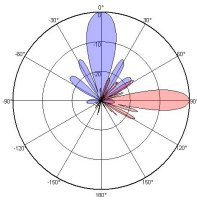
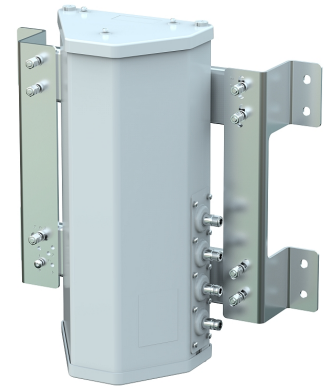


**XXPoI 4800~4900MHz×2 20° 18dBi 隧道Sector Panel Antenna**

Electrical Specifications	
Frequency range(MHz)	4800~4900×2
Polarization	±45°
Gain (dBi)	18
Horizontal 3dB beamwidth (°)	22
Vertical 3dB beamwidth (°)	17
Front-to-back ratio (dB)	≥23
Cross-polar ratio (dB)	Main direction≥15
VSWR	≤1.5
Isolation: intra-system (dB)	≥25
Impedance (Ω)	50
Max. power per input (W) @50°C	50
Lightning protection	Dc Ground

Mechanical Specifications	
Connector	4×N-Female
Connector position	Side face
Height×width×depth (mm)	480×234×172
Packing size (mm)	610×532×315
Antenna weight (kg)	8.5
Packing weight (kg)	11
Max. wind velocity (km/h)	216
Radome material	Fiberglass
Radome color	Gray
Mechanical tilt (°)	±2°
Operating temperature (°C)	-40~65
Installation kit model	贴壁安装 (Wall mount)



4800~4900MHz