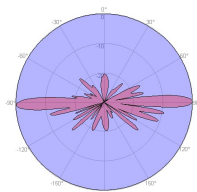
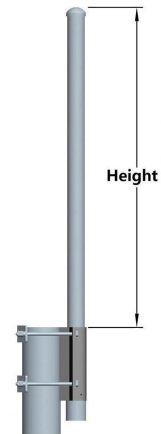


VPol 790~960MHz Omni 11dBi 0° Fixed Electrical Downtilt Antenna

Electrical Specifications		
Frequency range(MHz)	790~960	
	790~824	824~960
Polarization	Vertical	
Gain (dBi)	10.5	11
Horizontal 3dB beamwidth (°)	360	360
Circularity(dB)	3	3
Vertical 3dB beamwidth (°)	8.0	7.0
Electrical downtilt (°)	3	
VSWR	≤1.5	
Impedance (Ω)	50	
Max. power per input (W) @50°C	100	
Lightning protection	Dc Ground	

Mechanical Specifications	
Connector	1×7/16DIN-Female
Connector position	Bottom
Height×width×depth (mm)	2982×φ51.5
Packing size (mm)	3135×215×145
Antenna weight (kg)	6.5
Packing weight (kg)	9.3
Max. wind velocity (km/h)	241
Radome material	Fiberglass
Radome color	Gray
Operating temperature (°C)	-40~65
Mounting hardware (mm)	Φ50~Φ115



790~960MHz