

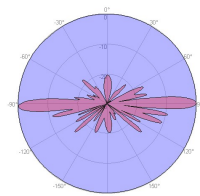
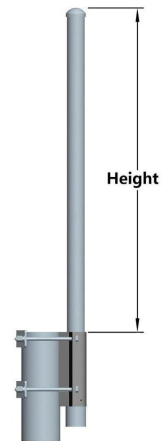
**VPol 824~896MHz Omni 10.5dBi 3° Fixed Electrical Downtilt Antenna**

**Electrical Specifications**

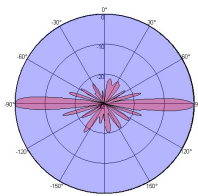
Frequency range(MHz)	824~896
Polarization	Vertical
Gain (dBi)	10.5
Horizontal 3dB beamwidth (°)	360
Vertical 3dB beamwidth (°)	7.8
Electrical downtilt (°)	3
VSWR	≤1.5
Impedance (Ω)	50
Max. power per input (W) @50°C	500
Lightning protection	Dc Ground

**Mechanical Specifications**

Connector	1×7/16DIN-Female
Connector position	Bottom
Height×width×depth (mm)	2980×φ51.5
Packing size (mm)	3135×215×145
Antenna weight (kg)	6.4(with installation kit)
Packing weight (kg)	10.7
Max. wind velocity (km/h)	216
Radome material	Fiberglass
Radome color	Gray
Operating temperature (°C)	-50~65
Mounting hardware (mm)	Φ50~Φ115



824MHz



896MHz

