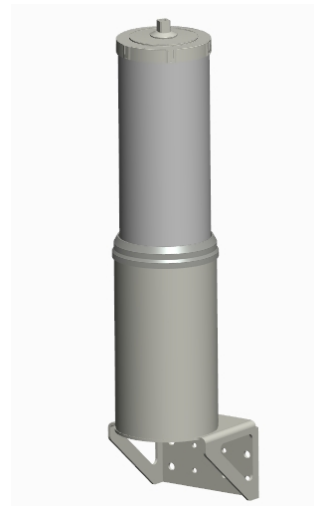
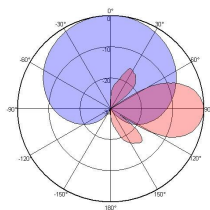


XPoI 1710~2690MHz 65° 12dBi 6° Fixed Electrical Downtilt Antenna,Cluster

Electrical specifications	
Frequency Range(MHz)	1710~2690MHz
Polarization	±45°
Gain (dBi)	11.5
Horizontal beamwidth (°)	65±8
Vertical beamwidth (°)	24±4
Front-to-back ratio (dB)	≥23
Cross-polar ratio (dB)	≥15(±60°≥10)
Electrical downtilt (°)	6
VSWR	<1.5
Isolation: intra-system (dB)	>25
Intermodulation IM3 (2×43dBm carrier)	≤-140dBc
Impedance (Ω)	50
Maximum input power (W)	250
Lightning protection	Dc Ground



Mechanical specifications	
Connector	3×2×7/16DIN-Female
Connector position	Bottom
Height×width×depth (mm)	Φ160×950
Packing size (mm)	1230×335×300
Antenna weight (kg)	8.4
Installation kit weight (kg)	5.4
Packing weight (kg)	17.7
Wind loading area (m2)	0.15
Radome material	PVC
Radome color	white
Operating temperature (°C)	-40~60
Mounting hardware (mm)	Φ130~Φ170



1710~2690MHz