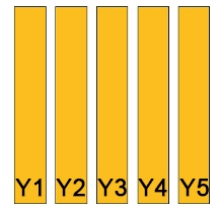
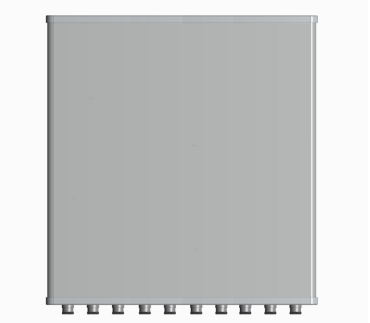


XXXXXPol 1710~2690MHz×5 Multi Beam 12° 23dBi 6° Fixed Electrical Downtilt Antenna

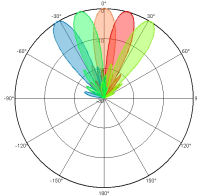
Electrical Specifications								
Frequency range (MHz)	Y1/Y5:1710~2690				Y2/Y4:1710~2690			
	1710~1990	1920~2200	2200~2490	2490~2690	1710~1990	1920~2200	2200~2490	2490~2690
Polarization	±45°							
Gain over all tilts (dBi)	20.2±0.5	21.1±0.5	21.5±0.6	20.5±0.5	21.4±0.5	21.9±0.6	22.2±0.6	22.5±0.6
Horizontal beam centers (°)	46±3.0	40±3.0	34±2.2	30±1.2	22±1.2	19±1.0	17±0.8	15±0.5
Horizontal 3dB beamwidth (°)	17.2±0.9	14.3±1.5	11.1±1.2	10.2±0.5	13.1±0.8	12.1±0.6	10.2±0.6	9.0±0.6
Vertical 3dB beamwidth (°)	12.3±0.6	11.4±0.8	10.1±0.6	9.0±0.6	12.7±0.6	11.6±0.7	10.0±0.6	8.7±0.5
Front to back ratio (dB) Total power, ±30°	>27	>28	>27	>25	>29	>29	>27	>27
Cross polar ratio (dB) (at Boresight)	>15				>15			
Electrical downtilt (°)	6							
Sidelobe suppression (dB) (First sidelobe above main beam)	>16	>18	>15	>15	>17	>17	>15	>15
VSWR	≤1.5							
Isolation: intra-system (dB)	≥25							
Isolation: beam to beam (dB)	≥17							
Intermodulation IM3 (2×43dBm carrier)	≤-150 dBc							
Impedance (Ω)	50							
Max. power per input (W) @50°C	200							
Lightning protection	Dc Ground							

Electrical Specifications				
Frequency Range (MHz)	Y3:1710~2690			
	1710~1990	1920~2200	2200~2490	2490~2690
Polarization	±45°			
Gain over all tilts (dBi)	22.2±0.4	22.5±0.3	22.7±0.4	23.5±0.3
Horizontal beam centers (°)	0±0.5	0±0.5	0±0.5	0±0.5
Horizontal 3dB beamwidth (°)	12.1±0.7	11.0±0.7	10.1±0.4	9.1±0.4
Vertical 3dB beamwidth (°)	12.6±0.6	11.6±0.6	10.0±0.7	8.7±0.5
Front to back ratio (dB) Total power, ±30°	>28	>28	>29	>29
Cross polar ratio (dB) (at Boresight)	>15			
Electrical downtilt (°)	6			
Sidelobe suppression (dB) (First sidelobe above main beam)	>17	>17	>15	>15
VSWR	≤1.5			
Isolation: intra-system (dB)	≥25			
Isolation: beam to beam (dB)	≥17			
Intermodulation IM3 (2×43dBm carrier)	≤-150 dBc			
Max. power per input (W) @50°C	200			
Lightning protection	Dc Ground			

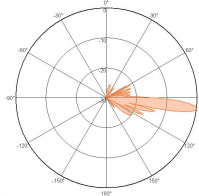
Mechanical Specifications	
Connector	10×4.3-10-Female
Connector position	Bottom
Height × width × depth (mm)	800×900×107
Packing size (mm)	1085×1020×205
Antenna weight (kg)	25
Installation kit weight (kg)	5.4
Packing weight (kg)	35.7
Wind load (N,at 150km/h) Frontal/Lateral/Maximum	780/100/900
Max. wind velocity (km/h)	216
Radome material	ASA
Radome color	Gray
Mechanical tilt (°)	0~10
Operating temperature (°C)	-40~60
Mounting hardware (mm)	Φ50~Φ115



Antenna Pattern Sample For Reference



Horizontal Pattern



Vertical Pattern