

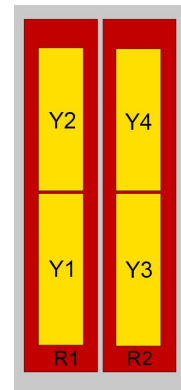
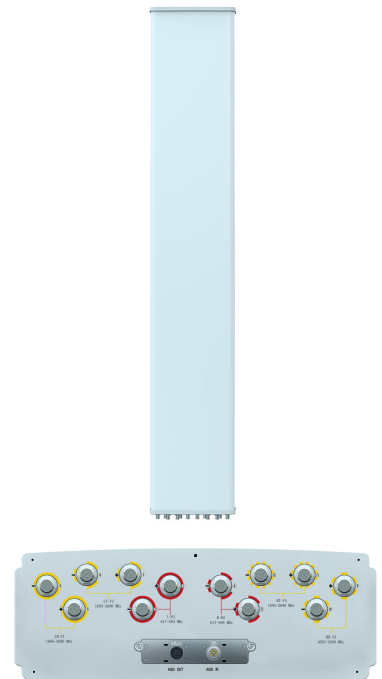
XXXXXXPol 617~894MHz×2/1695~2690MHz×2/1695~2690MHz×2 65°/65°/65° 16.3/17.5/17.3dBi 0°~10°/0°~10°/0°~10° Integrated RCU (Remote Control Unit) Antenna

Electrical Specifications							
Frequency range (MHz)	R1/R2-(617~894)			Y1/Y3-(1695~2690)			
	617-698	698-806	806-894	1695~1920	1920~2200	2200~2490	2490~2690
Polarization	±45°						
Gain over all tilts (dBi)	15.2±0.5	15.7±0.5	16.3±0.4	16.9±0.6	17.4±0.6	17.5±0.7	17.1±0.7
Horizontal 3dB beamwidth (°)	69±7	66±5	61±6	66±7	62±6	58±6	61±5
Vertical 3dB beamwidth (°)	10.8±0.8	9.5±0.5	8.7±0.6	7.1±0.6	6.4±0.6	5.6±0.3	5.3±0.4
Front to back ratio (dB) Total power, ±30°	>22	>25	>25	>24	>26	>26	>24
Cross polar ratio (dB) (at Boresight)	>17	>17	>18	>16	>17	>17	>16
Electrical downtilt (°)	0~10			0~10			
Sidelobe suppression (dB) (First sidelobe above main beam)	>15	>17	>16	>17	>17	>17	>16
VSWR	<1.5			<1.5			
Isolation: intra-system (dB)	≥25			≥25			
Isolation: inter-system (dB)	≥28			≥30			
Intermodulation IM3 (2×43dBm carrier)	≤-153 dBc			≤-153 dBc			
Impedance (Ω)	50			50			
Max. power per input (W) @50°C	400			250			
Lightning protection	Dc Ground						

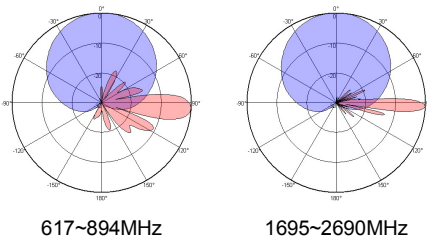
Electrical Specifications				
Frequency Range (MHz)	Y2/Y4-(1695~2690)			
	1695-1920	1920-2200	2200-2490	2490-2690
Polarization	±45°			
Gain over all tilts (dBi)	16.7±0.6	17.3±0.6	17.3±0.6	17±0.7
Horizontal 3dB beamwidth (°)	66±7	62±6	58±6	61±5
Vertical 3dB beamwidth (°)	6.5±0.3	5.6±0.4	5.2±0.3	4.8±0.3
Front to back ratio (dB) Total power, ±30°	>24	>26	>26	>24
Cross polar ratio (dB) (at Boresight)	>16	>17	>17	>16
Electrical downtilt (°)	0~10			
Sidelobe suppression (dB) (First sidelobe above main beam)	>17	>17	>16	>16
VSWR	<1.5			
Isolation: intra-system (dB)	≥25			
Isolation: inter-system (dB)	≥28			
Intermodulation IM3 (2×43dBm carrier)	≤-153 dBc			
Impedance (Ω)	50			
Max. power per input (W) @50°C	250			
Lightning protection	Dc Ground			

Mechanical Specifications	
Connector	12×4.3-10Female
Connector position	Bottom
Height × width × depth (mm)	2680×499×178
Packing size (mm)	3150×620×330
Antenna weight (kg)	51.6
Installation kit weight (kg)	8.8
Packing weight (kg)	69
Wind load (N,at 150km/h) Frontal/Lateral/Maximum	1497/290/1517
Max. wind velocity (km/h)	216
Radome material	Fiberglass
Radome color	Gray
Mechanical tilt (°)	0~8
Operating temperature (°C)	-50~65
Mounting hardware (mm)	Φ50~Φ115

Integrated RET Properties	
RET model	TRCU-TQ20P3V01
RET type	Integrated (Replaceable)
RET protocol	AISG 2.0 SRET
Power supply(V)	10-30 DC
Power consumption(W)	≤0.6 (Idle, 12V), ≤6 (In motion, 12V)
Adjustment time (Full Range)	< 4Mins
Adjustment cycles	> 50,000
Temperature range (°C)	-40~65
Lightning protection	3KA(8/20μs) @ Pin5 & Pin3; 5KA(8/20μs) @ Pin1 / Pin6 & Pin7
Connectors	2×8 Pin circle connector according to IEC 60130-9 and AISG. Daisy chain in:Male,Daisy chain out:Female Pin1:12V;Pin3:RS485B;Pin5:RS485A;Pin6:10-30V; Pin7:GND;Pin2&Pin4&Pin8:N/C



Antenna Pattern Sample For Reference



Ant Array	RET Unique ID
R1	TY00000.....R1
R2	TY00000.....R2
Y1	TY00000.....Y1
Y2	TY00000.....Y2
Y3	TY00000.....Y3
Y4	TY00000.....Y4